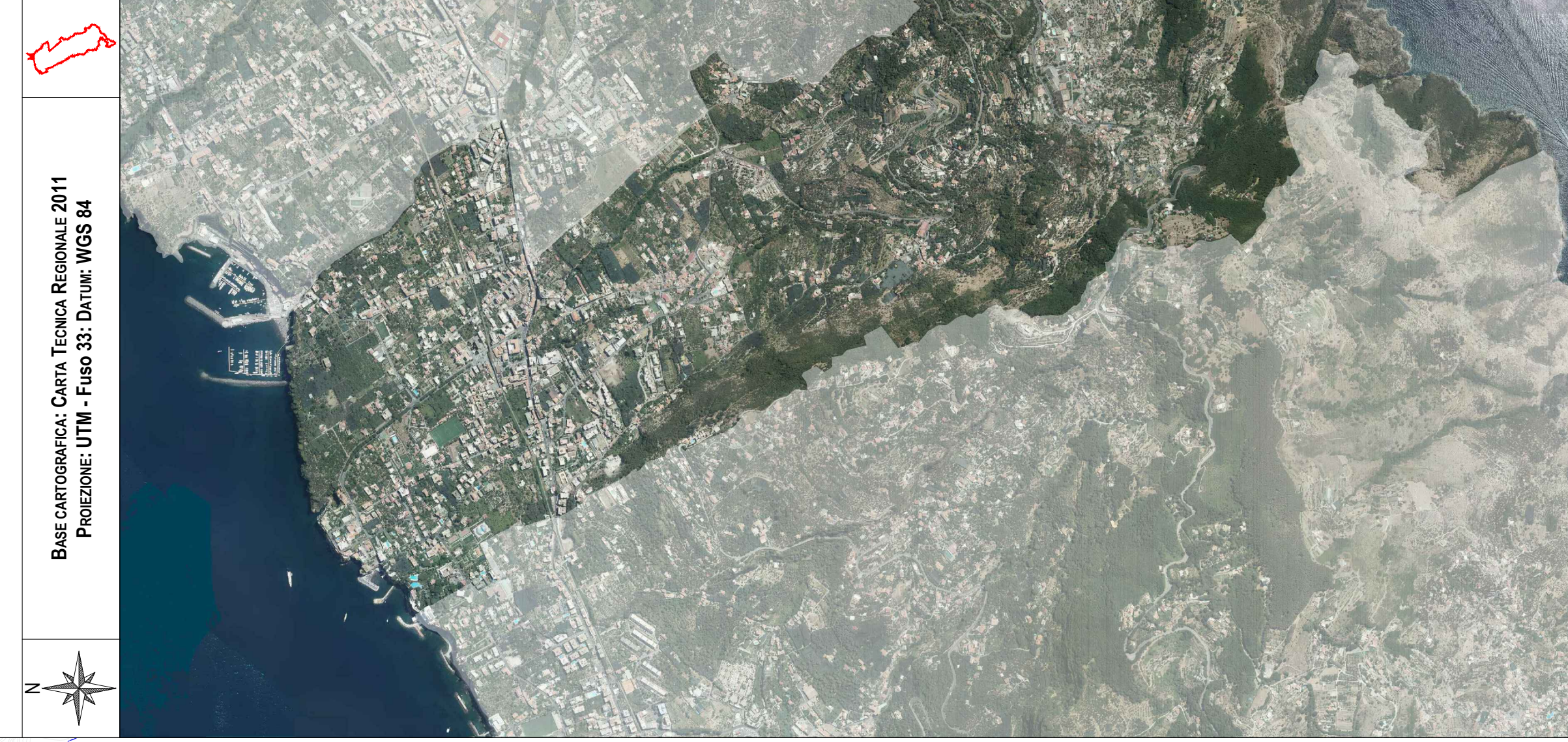




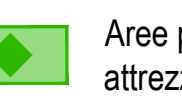
COMUNE DI SANT'AGELLO (NA)








STANDARD URBANISTICI DI LIVELLO TERRITORIALE

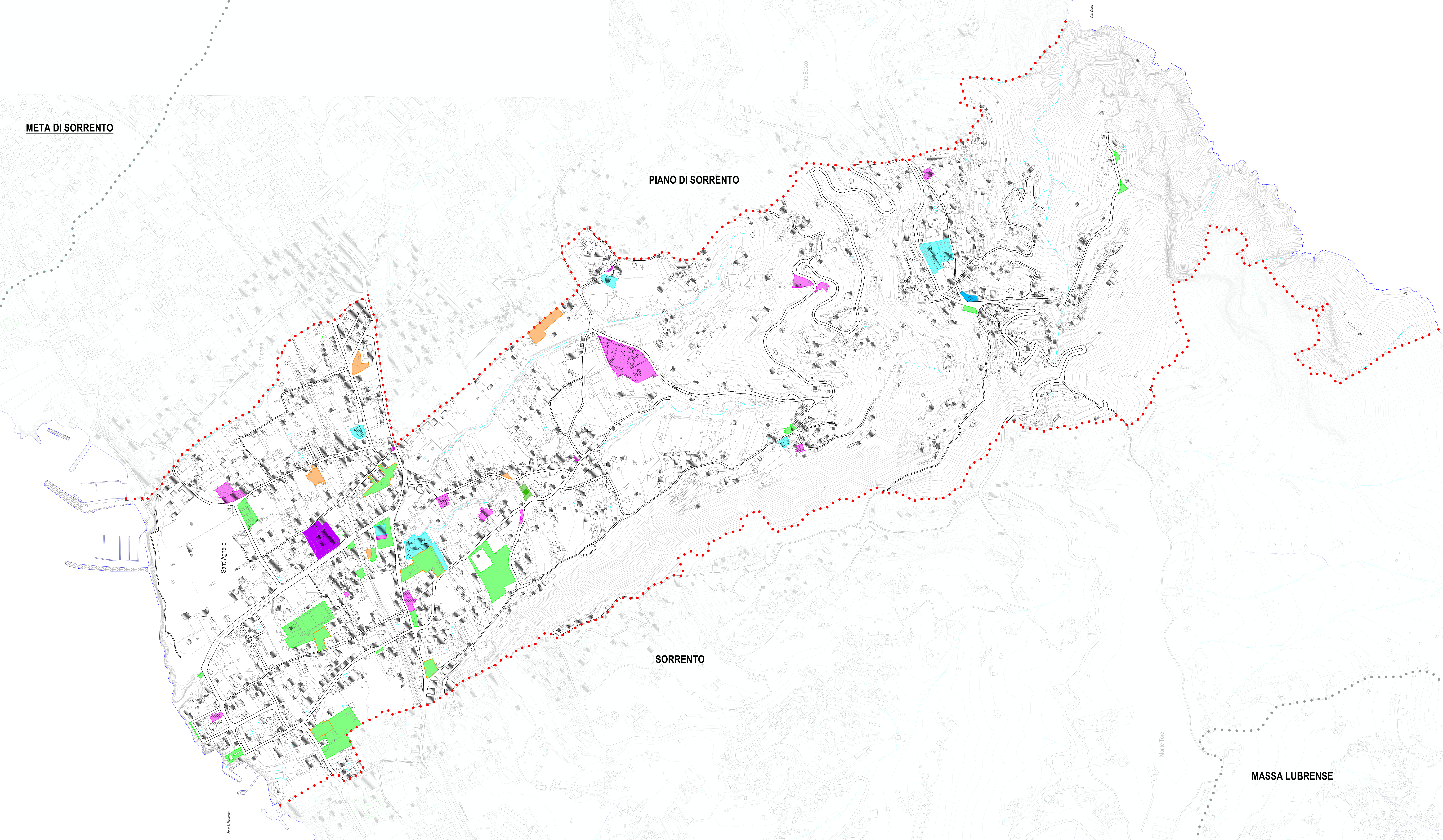
 Attrezzature sanitarie ed ospedaliere	SUPERFICIE 6.998,97 mq	DOTAZIONE 1,01 mq/ab	CARENZA/SURPLUS +0,01 mq/ab
 Aree per l'istruzione superiore	SUPERFICIE 1.101,22 mq	DOTAZIONE 0,12 mq/ab	CARENZA/SURPLUS -1,36 mq/ab

STANDARD URBANISTICI IN SEDE IMPROPRIA

 Aree per spazi pubblici attrezzati	SUPERFICIE 1.113,66 mq	DOTAZIONE 0,12 mq/ab
--	---------------------------	-------------------------

STANDARD URBANISTICI DI LIVELLO LOCALE IN SEDE PROPRIA

 Aree per attrezzature di interesse comune	SUPERFICIE 28.908,94 mq	DOTAZIONE 3,25 mq/ab	CARENZA/SURPLUS +1,25 mq/ab
 Aree per l'istruzione	SUPERFICIE 19.045,07 mq	DOTAZIONE 2,14 mq/ab	CARENZA/SURPLUS -2,36 mq/ab
 Aree per spazi pubblici attrezzati	SUPERFICIE 70.647,39 mq	DOTAZIONE 7,94 mq/ab	CARENZA/SURPLUS -10,08 mq/ab
 Aree per parcheggi a raso	SUPERFICIE 28.712,41 mq	DOTAZIONE 3,22 mq/ab	CARENZA/SURPLUS +0,72 mq/ab
 Aree per parcheggi interrati			



MASSA LUBRENSE